



DOUBLETREE

BY HILTON™

LONDON - WEST END

*Dine in*



# BREAKFAST

SERVED DAILY FROM 6:30AM TO 11:00AM

## CONTINENTAL BREAKFAST

£17.50

### Fruit juices

orange, apple or tomato and pink grapefruit

### Fruits

figs in syrup, peaches or fresh fruit salad

### Cereals

selection of cereals or DoubleTree signature granola with full fat, semi-skimmed or soya milk

### Dairies

fruit yoghurt or natural yoghurt

### Pastries and breads

mini-Danish, cranberry twists or mini-pain au custard, croissant, white and wholemeal bread and freshly baked rolls

### Jams and preserves

raspberry, strawberry, honey and orange marmalade

### Hot beverages

freshly brewed coffee, traditional English breakfast tea or decaffeinated coffee

## TRADITIONAL BREAKFAST

£22.50

*Continental breakfast selection included*

Cumberland sausages, grilled bacon, grilled tomatoes, vegetarian sausages, sautéed mushrooms, hash brown and baked beans

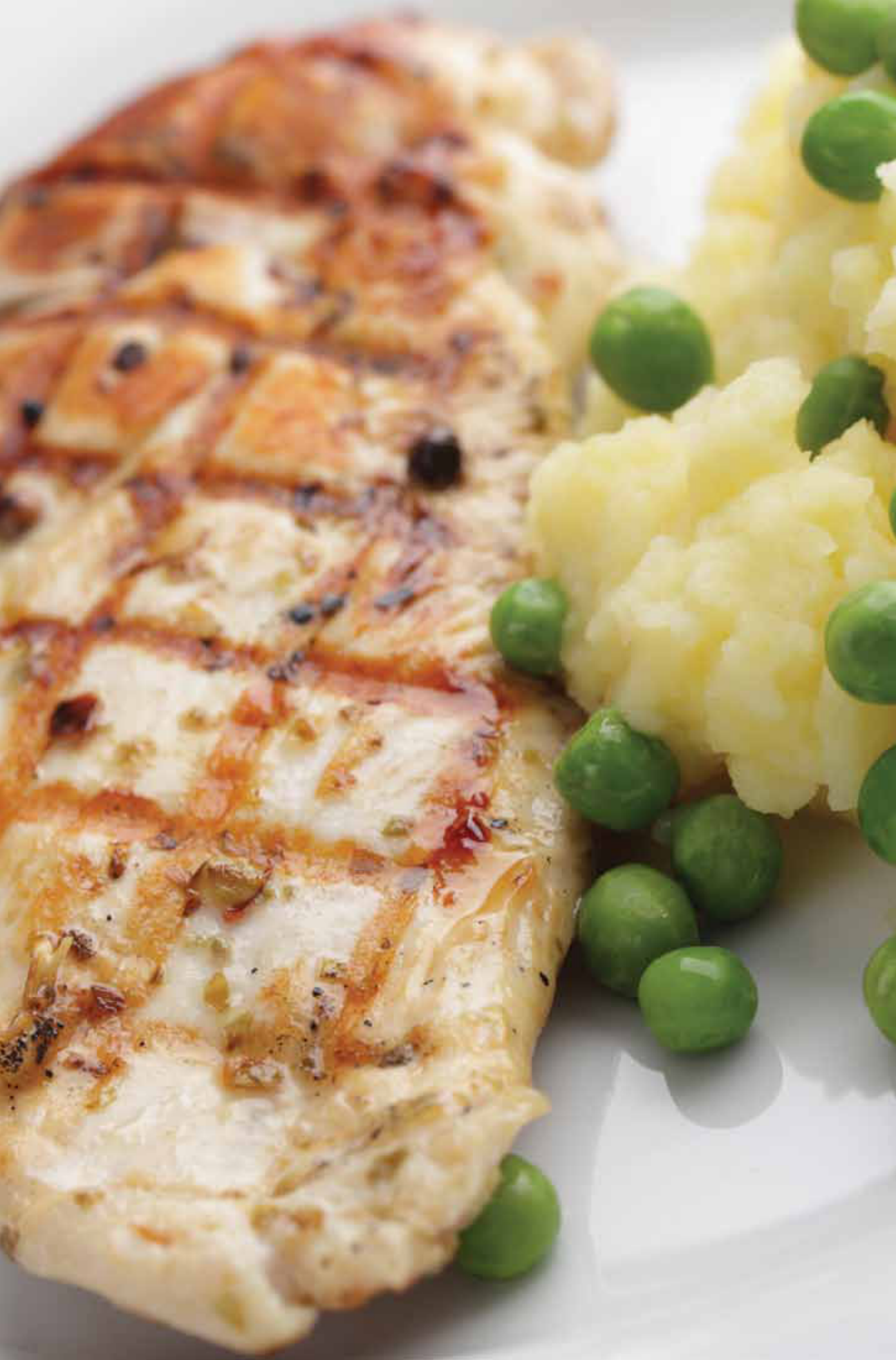
Choice of: *scrambled eggs, fried eggs or boiled egg*

To pre-order your in-room breakfast, please complete and hang the room service card on the outside of your door before 2.00am

(v) suitable for vegetarians, but may contain dairy.

All our food is prepared in a kitchen where all or some of the below listed food allergens are present. Our menu descriptions do not include all ingredients. If you have a food allergy or intolerance, please let us know before ordering. Full allergen information is available, please ask a team member for details. Allergens: Gluten, Crustaceans, Molluscs, Egg, Fish, Peanuts, Tree nuts, Soya, Milk, Celery, Mustard, Sesame, Lupin, Sulphites.

All prices are inclusive of VAT at the prevailing rate. An additional tray charge of £5.00 will be added per in-room breakfast dining order.



# HEALTHY EATING

SERVED DAILY FROM 11.00AM - 10.30PM

<b>Homemade soup of the day</b> with freshly baked bread	<b>£6.50</b>
<b>Healthy salad of sun-dried tomatoes, orange and shaved asparagus (v)</b> with pomegranate seeds and molasses dressing	<b>£7.50</b>
<b>Plum tomato and peppered mozzarella (v)</b> with artichokes, wild rocket, basil and aged balsamic dressing	<b>£7.50</b>
<b>Classic Caesar salad</b> <i>add free-range chicken</i> <i>add king prawns</i>	<b>£11.50</b> <i>£3.00</i> <i>£3.00</i>
<b>Oriental beef salad</b> with watercress, cucumber, red radish, coriander and toasted sesame seeds	<b>£14.00</b>

(v) suitable for vegetarians, but may contain dairy.

All our food is prepared in a kitchen where all or some of the below listed food allergens are present. Our menu descriptions do not include all ingredients. If you have a food allergy or intolerance, please let us know before ordering. Full allergen information is available, please ask a team member for details.  
Allergens: Gluten, Crustaceans, Molluscs, Egg, Fish, Peanuts, Tree nuts, Soya, Milk, Celery, Mustard, Sesame, Lupin, Sulphites.

All prices are inclusive of VAT at the prevailing rate.  
An additional tray charge of £2.50 will be added per in-room dining order.



# FILLERS & BITES

SERVED DAILY FROM 11.00AM - 10.30PM

## SANDWICHES

<b>Mature Cheddar and onion chutney (v)</b> served with house salad and crisps	<b>£9.00</b>
<b>Free-range egg mayonnaise (v)</b> served with house salad and crisps	<b>£9.00</b>
<b>Honey roasted ham and English mustard</b> served with house salad and crisps	<b>£9.00</b>
<b>Falafels in pitta pockets and mint yoghurt (v)</b> served with house salad and crisps	<b>£11.00</b>
<b>Classic club sandwich</b> chicken, bacon, lettuce, tomato and fried egg with French fries	<b>£15.00</b>
<b>Minute steak ciabatta with fried onions and watercress</b> with a salad garnish and French fries	<b>£15.00</b>

(v) suitable for vegetarians, but may contain dairy.

All our food is prepared in a kitchen where all or some of the below listed food allergens are present. Our menu descriptions do not include all ingredients. If you have a food allergy or intolerance, please let us know before ordering. Full allergen information is available, please ask a team member for details.  
Allergens: Gluten, Crustaceans, Molluscs, Egg, Fish, Peanuts, Tree nuts, Soya, Milk, Celery, Mustard, Sesame, Lupin, Sulphites.

All prices are inclusive of VAT at the prevailing rate.  
An additional tray charge of £2.50 will be added per in-room dining order.

# ALL DAY DINING

SERVED DAILY FROM 11:00AM TO 10:30PM

<b>Breaded scampi</b> with tartare sauce and French fries	£12.00
<b>Vegetable bean burger (v)</b> served in a focaccia bun with Cheddar, relish and French fries	£12.00
<b>Grilled chicken burger</b> served in a brioche bun with Cheddar, caramelised onion and French fries <i>add bacon</i>	£13.00 £1.25
<b>Spicy harissa lamb wrap</b> served with mint yoghurt dip, salad garnish and crisps	£13.50
<b>Classic fish pie</b> a combination of haddock, cod and prawns, topped with mashed potatoes	£14.00
<b>8oz West End beef burger</b> served in a brioche bun with onion rings, Cheddar, relish and chunky chips <i>add bacon</i>	£15.00 £1.25
<b>Crispy battered cod fillet</b> with chunky chips, mushy peas and tartare sauce	£16.50
<b>10oz corn-fed chicken fillet</b> served with roasted cherry tomatoes, sautéed spinach, rosemary potatoes and tarragon sauce	£17.50
<b>Pan-fried salmon</b> served with beetroot, mustard mash, asparagus and lemon butter sauce	£18.00
<b>10oz rib-eye steak</b> served with grilled vine tomatoes, field mushrooms, chunky chips and Béarnaise sauce	£26.50

## CURRY LOVERS

<b>Thai red vegetable curry (v)</b> served with steamed basmati rice	£14.00
<b>Tilapia fish jalfrezi</b> served with pilaf rice, naan bread and raita	£15.50
<b>Chicken tikka masala</b> with cucumber raita, mango chutney, naan bread and basmati rice	£17.50

(v) suitable for vegetarians, but may contain dairy.

All our food is prepared in a kitchen where all or some of the below listed food allergens are present. Our menu descriptions do not include all ingredients. If you have a food allergy or intolerance, please let us know before ordering. Full allergen information is available, please ask a team member for details.  
Allergens: Gluten, Crustaceans, Molluscs, Egg, Fish, Peanuts, Tree nuts, Soya, Milk, Celery, Mustard, Sesame, Lupin, Sulphites.

All prices are inclusive of VAT at the prevailing rate.  
An additional tray charge of £2.50 will be added per in-room dining order.



# ALL DAY DINING

SERVED DAILY FROM 11:00AM TO 10:30PM

## PIZZA, PASTA AND RISOTTO

<b>Margherita pizza (v)</b>	<b>£12.00</b>
<b>Pepperoni pizza</b>	<b>£14.00</b>
<b>Green pea and asparagus risotto (v)</b> with flaked Parmesan	<b>£13.50</b>
<b>Spinach and ricotta tortellini (v)</b> with sundried tomatoes, olives and roasted garlic	<b>£14.00</b>

## SIDES £3.50 each

Chunky chips  
French fries  
Steamed seasonal vegetables  
Mixed leaf salad  
Onion rings  
Garlic bread  
Buttered new potatoes  
Poppadoms (2 pieces) with mango chutney and mint yoghurt

## DESSERTS

<b>Warm DoubleTree cookie</b> with pistachio ice-cream	<b>£5.00</b>
<b>Fresh fruit salad</b>	<b>£6.50</b>
<b>Trio of ice-cream</b> chocolate, vanilla and strawberry	<b>£7.00</b>
<b>Banoffee pie</b> a biscuit base, topped with rich toffee, cream and fresh caramelised bananas	<b>£7.95</b>
<b>Rich chocolate fudge cake</b> served with vanilla ice-cream	<b>£8.00</b>
<b>Selection of English cheeses</b> served with celery, grapes and chutney	<b>£7.95</b>

(v) suitable for vegetarians, but may contain dairy.

All our food is prepared in a kitchen where all or some of the below listed food allergens are present. Our menu descriptions do not include all ingredients. If you have a food allergy or intolerance, please let us know before ordering. Full allergen information is available, please ask a team member for details.  
Allergens: Gluten, Crustaceans, Molluscs, Egg, Fish, Peanuts, Tree nuts, Soya, Milk, Celery, Mustard, Sesame, Lupin, Sulphites.

All prices are inclusive of VAT at the prevailing rate.  
An additional tray charge of £2.50 will be added per in-room dining order.



# ALL DAY & NIGHT MENU

SERVED 24 HOURS

## SANDWICHES

<b>Mature Cheddar and onion chutney (v)</b> served with house salad and crisps	£9.00
<b>Free-range egg mayonnaise (v)</b> served with house salad and crisps	£9.00
<b>Honey roasted ham and English mustard</b> served with house salad and crisps	£9.00
<b>Classic club sandwich</b> chicken, bacon, lettuce, tomato and boiled egg, served with crisps	£15.00

## MAINS

<b>Homemade soup of the day</b> with freshly baked bread	£6.50
<b>Healthy salad of sun-dried tomatoes, orange and shaved asparagus (v)</b> with pomegranate seeds and molasses dressing	£7.50
<b>Plum tomato and peppered mozzarella (v)</b> with artichokes, wild rocket, basil and aged balsamic dressing	£7.50
<b>Classic Caesar salad</b> <i>add free-range chicken</i> <i>add king prawns</i>	£11.50 £3.00 £3.00
<b>Margherita pizza (v)</b>	£12.00
<b>Pepperoni pizza</b>	£14.00
<b>Thai red vegetable curry (v)</b> served with steamed basmati rice	£14.00
<b>Chicken tikka masala</b> with cucumber raita, mango chutney, naan bread and basmati rice	£17.50

## DESSERTS

<b>Trio of ice-cream</b> chocolate, vanilla and strawberry	£7.00
---	-------

(v) suitable for vegetarians, but may contain dairy.

All our food is prepared in a kitchen where all or some of the below listed food allergens are present. Our menu descriptions do not include all ingredients. If you have a food allergy or intolerance, please let us know before ordering. Full allergen information is available, please ask a team member for details.  
Allergens: Gluten, Crustaceans, Molluscs, Egg, Fish, Peanuts, Tree nuts, Soya, Milk, Celery, Mustard, Sesame, Lupin, Sulphites.

All prices are inclusive of VAT at the prevailing rate.  
An additional tray charge of £2.50 will be added per in-room dining order.



# KIDS MENU

SERVED DAILY FROM 11.00AM -10.30PM  
AVAILABLE FOR CHILDREN UNDER 12 YEARS OF AGE

2 course £7.50  
3 course £10.00

## LIGHT BITES

**Fan of melon slices (v)**

**Homemade soup of the day**

**Garlic bread with cheese (v)**

**Chicken nuggets with fries**

**Fish fingers with buttered peas**

## MAINS

**Penna pasta with tomato sauce (v)**

**Mini burger with crispy thin fries**

**Mini pizza with cheese and tomato (v)**

**Mini pizza with pepperoni**

**Grilled chicken, mash and baked beans**

## DESSERTS

**Ice-cream** (two scoops of your choice)  
vanilla, strawberry, chocolate

**Fresh fruit salad**

**Fruit yoghurt**

**Mini raspberry mousse**

(v) suitable for vegetarians, but may contain dairy.

All our food is prepared in a kitchen where all or some of the below listed food allergens are present.  
Our menu descriptions do not include all ingredients. If you have a food allergy or intolerance, please let us know before ordering.  
Full allergen information is available, please ask a team member for details.  
Allergens: Gluten, Crustaceans, Molluscs, Egg, Fish, Peanuts, Tree nuts, Soya, Milk, Celery, Mustard, Sesame, Lupin, Sulphites.

All prices are inclusive of VAT at the prevailing rate.  
An additional tray charge of £2.50 will be added per in-room dining order.



# BEVERAGES

SERVED 24 HOURS

## BOTTLED BEERS

	330ml	
Sol Mexican		£5.25
Peroni		£5.50
Stella Artois		£4.75
London Pride		£4.95
Old Speckled Hen 500ml		£5.95
Magners Cider 568ml		£6.95

## WHITE WINE

	250ml	Bottle
El Velerio Verdejo Blanco, Valdepeñas, Castilla-La Mancha, Spain	£7.95	£22.50
Luis Felipe Edwards Lot 66 Sauvignon Blanc, Rapel Valley, Chile	£8.95	£25.50
Kleine Zalze Bush Vines Chenin Blanc, Coastal Region, South Africa	£9.25	£27.50

## RED WINE

	250ml	Bottle
Vita Sangiovese Merlot, Terre Sicilliane, Italy	£7.95	£22.50
Luis Felipe Edwards Lot 37 Pinot Noir, Maule Valley, Chile	£9.25	£26.95
Marqués de Morano Rioja Crianza Tinto, Spain	£11.50	£33.50

## CHAMPAGNE & SPARKLING WINE

	125ml	Bottle
Duval-Leroy Brut Réserve, Champagne, France	£11.50	£62.00
Sant' Orsola Prosecco Extra Dry, Veneto, Italy	£6.95	£35.50

## SOFT DRINKS & JUICES

Fruit Juice - Orange / Apple / Cranberry 330ml		£2.95
Cola / Diet Cola 250ml		£2.50
Lemonade 250ml		£2.50
Mineral Water (Still/Sparkling) 750ml		£3.95

125ml and 175ml measures are available upon request.  
A full selection of the hotel's beverages are available upon request.

All prices are inclusive of VAT at the prevailing rate.  
An additional tray charge of £2.50 will be added per in-room dining order.



DOUBLETREE BY HILTON HOTEL LONDON - WEST END  
92 Southampton Row, London WC1B, 4BH, United Kingdom T: +44 207 242 2828  
W: [dtlondonwestend.com](http://dtlondonwestend.com)

